



**CAMERA TRAPS cc**  
 Tel: +27 (0) 83 560 0555 | +27 (0) 82 422 0356  
 E-mail: info@cameratrap.co.za  
 Website: www.cameratrap.co.za



## CAMERA TRAPS for SECURITY APPLICATIONS

Unfortunately in this day and age, security concerns are a very real issue. Since 2007 we have supplied and deployed thousands of camera trap units specifically for security applications around SA and Africa – primarily to combat poaching (specifically rhino) in numerous National, Provincial and Private game reserves but also in numerous residential community policing areas, commercial farms and businesses.

For security applications, we would **only** recommend **Black Flash (No Glow)** flash models as with these units there is no flash or red glow at all from the built-in flash emitters when triggered / activated at night-time (when there is insufficient light) – like there would be with normal IR (infrared) or strobe flash models. With standard camera traps the triggered footage is recorded onto the cameras' SD memory cards and has to be manually retrieved / downloaded. This is termed a **REACTIVE** approach.

Coupled with the **cellular capability** of certain models (cellular camera traps) - the triggered footage (images or short video clips) is still saved to the cameras' SD memory card and is then also immediately transmitted to user-selected receivers on their devices. This is termed a **PROACTIVE** approach as it allows users to then activate response personnel instantaneously to the threat area. These units are also all remotely controllable / programmable so a selected 'Admin' user can change a wide variety of settings / check status etc. from anywhere in the World whenever and if ever they wanted to. We work exclusively with the manufactures and have adapted them to work effectively in our local environments. They are tried and tested in SA / Africa and have directly led to many arrests and countless incident preventions due to their ability to immediately notify / alert users to potential threats thus making them a vital proactive crime prevention tool – rather than a reactive one.

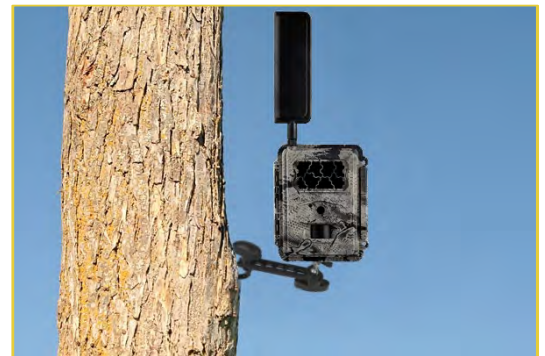
### Mounting the camera is crucial for security

When mounting your camera trap for security / surveillance, the aim is to try mount the unit out of the line of sight and make it blend in to the environment and look as unobtrusive as possible. For most instances camera traps should be set up +/- 4-5 meters up a tree / pole, pointed down at the target area that you want to cover taking pictures of anyone that walks or drives by.

- a) All units come with a nylon strap which can fasten around a tree or pole etc. which will enable you to set up the trap – however this is not that adjustable (stocks / stones can be used) or secure enough to prevent theft of the unit if it is spotted.



- b) A very helpful accessory is a camera trap mount or mounting arm (*fits all camera traps with a standard 1/4-20" tripod mount*) which can screw into a tree and is very adjustable however - not secure.



- c) The most secure option is to use a metal protection housing **and** a MasterLock Python cable to properly secure your camera trap. Although it can be a bit bulky and may tend to stick out more, it does allow for you to camouflage the housing for added concealment.





### Camera Trap Camouflage

Most of us are honest people so will leave it be if one sees a camera trap in the field. However, the amount of units that are being stolen is ever increasing. With their unnatural, mostly rectangular shapes (especially if also in a metal security case), camera traps can still get unwanted attention so the need to camouflage them or 'blend them in' is important in most situations.

We have seen some very creative methods over the years but the basic concept remains the same. You basically need to break up the rectangular shape of the camera trap and make it blend into the surrounding environment. Be careful not to cover the PIR sensor, built-in flash emitters or the camera lens when doing so as this will make the trap ineffective. Good materials to use are the following;

- Tree bark / lichen / moss / leaves
- Old fluffy carpet
- Spray-paint (brown, dark green, grey, black)

Below are some examples of camouflaged units...



Kind Regards

CAMERA TRAPS cc

Mobile: +27 (0) 83 560 0555 | +27 (0) 82 422 0356  
E-mail: [info@cameratraps.co.za](mailto:info@cameratraps.co.za)  
Web: [www.cameratraps.co.za](http://www.cameratraps.co.za)

CAMERA TRAPS cc is a **LEVEL 4 B-BBEE CONTRIBUTOR**