

## T-Pro SERIES - Thermal Imaging Scopes [12µm, 50Hz]

(Can be used as Monocular / Scope OR can be weapon mounted)

(LRF models = with Laser Range Finder)

### MODELS:

**T-Pro 25/25LRF = 25mm Objective Lens**

**T-Pro 35/35LRF = 35mm Objective Lens**

**T-Pro 50/50LRF = 50mm Objective Lens**

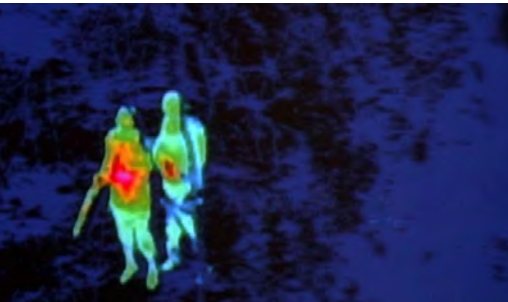
The T-pro thermal scope has an uncooled, 12µm 384x288 detector and runs at 50Hz. The LRF models have a built-in rangefinder that can range out to an impressive 800m. They have LCD eyepiece screens of 800x600 resolution that is visually stunning with white hot/ black hot/ red hot spot/ rainbow and sky modes, showing e-compass, 3d gyroscope, heat tracking, 8 style of reticle with 4 colours, battery indicator and rangefinder readout in yards or meters.

That's not all, it's built with a tough outer shell 7075 aircraft alloy so only weighs 500g, fully water proof to IP67 weaver/picatinny style mount system, you can plug in an external screen (sold separately) to record or show a friend. This well balanced thermal even has a laser that you can use to designate a target or use as a secondary target system for close quarter. The unit can take up to 9 thousand joules, so high recoil rifles not a problem and a diopter/ eye cup that complements the recoil gap you will need for eye relief.

- Sensor 12µm un-cooled Vox 384x288, 50Hz
- Selectable White-hot / Black-hot / Red-hot / IR-hot / Sky modes
- The smallest, most weightless thermal imaging rifle scope
- Shutterless design, fast & smooth display
- Matte black finish of 6061 Aerospace Aluminum Alloy; Max. recoil
- power is 6,000 Joules on rifled weapon; Sunshine-proof, self-repair
- SZ65 port
- Heat tracking function;
- Red dot / Laser



(LRF models = with Laser Range Finder)



Specifications			
Model No.	T-Pro 25/25LRF	T-Pro 35/35LRF	T-Pro 50/LRF
Sensor	384x288, 12µm, 50Hz		
Magnification	3.5-14x	4.5-18x	5.5-22x
Angle of view(HxV)	10.6*8.0	7.6*5.7	5.3*3.7
Objective lens	25mm/f1.0	35mm/f1.0	50mm/f1.0
Shutter	Shutter-less calibration of uncooled cameras		
Eyepiece Resolution	800x600		
Exit pupil	8mm		
Eye relief	45mm		
Dioptre adjustment	± 5		
Focus Method	Manual		
Focus Range	1 m to Infinity	3 m to Infinity	5 m to Infinity
Reticle Type	9-Pattern optional, or "NO reticle"		
Display format	White Hot / Black Hot/ red hot / Iron red / Sky		
Human Detection Distance	1500 m	1800 m	2500 m
Vehicle Detection Distance	3000 m	3800 m	4200 m
Measuring Distance of Rangefinder	**/ 600m	**/ 600m	**/ 600m
Measurement Accuracy of Rangefinder	± 0.5m		
Defective Pixel Repair	Yes		
E-compass	Yes		
3D Gyroscope	Yes		
Startup Time	Less than 2 seconds		
Battery	Li-ion 18650 4.2V Rechargeable Battery replaceable		
Housing Materials	6061 Aluminum Alloy		
Housing Finish	Matte black finish		
Body Size (mm)	Standard	193.6*58*57.7	209*58*57.7
	With Rangefinder	193.6*89.5*57.7	209*89.5*57.7
Weight (NO battery)	480/513g	480/513g	500/530g