

AGT-PSCN32156 Perseus Trend Ultra Long Range Cooled Thermal Imaging Camera



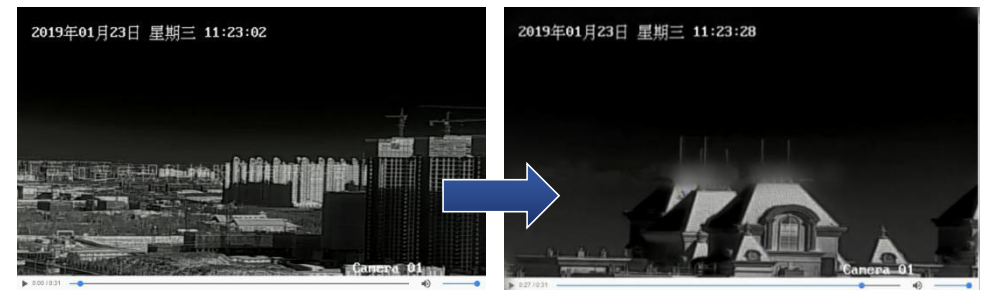
Product's Highlights:

1. This **Perseus** PSCN series camera is developed with the latest cooled thermal IR technology detecting 18km+ ultra long distance.
2. The camera features a high NETD, advanced digital circuit and image processing algorithm providing users with crisp thermal images;
3. Usually Cooled Thermal Camera comes in 3 types, i.e. 20X continuous zoom, bi-fov and tri-fov.
4. 20mk NETD ensures premium a thermal image, less affected by weather, and suitable for water surface detection.
5. Unique AS+DOE continuous 20X optical zoom; a smaller thermal IR

6. camera lens and 3CAM high precision mechanical engineering.
6. Superb homogeneous correction ensures crisp thermal image.
7. SDE image enhancement, smooth and noise-free screen image, more choice on pseudo colour image and B/W, strong adaptability, easy to find low contrast / hidden target.
8. Strong light protection, anti-sunburn, supports multi-modal scenario mode, suitable for different applications.
9. Supports hot-point alert, transgression and invasion detection, auto-tracking function etc...
10. Aluminium alloy enclosure and IP 66 rated to withstand harshest weather conditions.

Application Range:

1. Border defence;
2. Coastal line monitoring;
3. Military training field monitoring;
4. Seaport, harbour & airport security and safety monitoring;
5. River, lake & other water system monitoring;
6. Railway & highway system monitoring;
7. Oilfield security;
8. City Security and Safety Monitoring & Surveillance



Specification:

Model	AGT-PSCN32156	AGT-PSCN32153
General Specifications		
Detection	Vehicle:18000m	Vehicle:9000m
	Human:11000m	Human:5000m
Identification	Vehicle:7000m	Vehicle:3500m
	Human:3500m	Human:1800m
Detector	Cooled Focal Plane Array (FPA) MCT HgCdTe detector	
Cooling	Stirling cryocooler	
Resolution	640×512, 50Hz	320×256, 50Hz
Pixel size	15µm X 15µm	30µm X 30µm
Spectral range	3.7 - 4.8µm, MWIR	
NETD	20mK(@25°C F4.0)	
Lens	15 - 300mm, F4.0	
FOV(H)	35° × 28° - 1.8° × 1.46°	
Angular Resolution	1 ~ 0.05mrad (Mil.)	2 ~ 0.01mrad (Mil.)
Lens Control		
1. Zooming: Motorized zoom, 2. Focus: Auto/manual focus (3A adaptive active focusing algorithm, supporting multiple trigger modes, accurate and high-speed) 3. Optical machine: 3CAM mode and AS+DOE optical structure, high infrared over transmission, zoom process without virtual focus, smaller axis.		
Image Processing		
1. Start-up: ≤8min@20°C , ≤12min@60°C 2. Image enhancement: SDE digital image processing. 3. Pseudo colour polarity: 16 pseudo color and B/W, B/W conversion. 4. Image parameter: AGC automatic gain control, brightness and contrast. 5. Cross division: Display/hidden/SetPixel		

- Digital zoom: 2X, 4X digital amplification, or 1.0 - 8.0 continuous zooming (Length 1.0), support general synchronized display.
- NUC Correction: Auto/Manual correction, background correction.
- Blind pixel correction: support bad point blind pixel correction.
- Hot-points analysis: support multiple hot-points box show alarm function.

Enhancement

- Strong Light Protection: Support anti sunburn function.
- Temperature correction: no thermal imagery design, thermal imaging clarity is not affected by temperature.
- Scene mode: support multi-configuration scenarios, adapt to different environment applications.
- Mirror image: Support left-right/up-down/diagonal mirror inversion, convenient for normal installation or hoisting.
- Lens Servo: Support the functions of lens preset, focal length return and focal length location.
- Remote Maintenance: Support remote upgrade of embedded programs, convenient for after-sales maintenance.
- Parameter Settings: OSD Menu Remote Call Operations.

Interface

- Control: RS485/RS232(PELCO D, baud rate:2400bps/s);
- Menu: OSD;
- Video: PAL;
- Power supply: DC24V;
- Connector: waterproof aviation connector.

Housing

- Material: aluminum alloy housing, sealed and dust-proof/water-proof; to prevent mold and steam.
- Structure: Integral single window design;
- Surface: PTA coating, anti sea water corrosion;
- Sealing rate: IP66 (IP67 Optional)
- Built-in temperature controller, thermal balance design;

6. Size: 380mm x 180mm x 190mm
7. Weight: about 6.5kg
8. Interface: aviation waterproof connector

Intelligence Function (Optional)

1. Auto-tracking system;
2. Anti-drone tracking system;
3. Panoramic stitching;
4. Radar linkage;
5. Hot-point alert;
6. Patrol detection;
7. 3D zooming/positioning selection;

(The above functions need to be implemented in conjunction with general software and network modules)

Interface

1. Network interface: RS232/RS422 (PELCO D protocol, Baud rate 2400bps), RS-232 (optional) ;
2. Video output: BNC, PAL/NTSC composite video;
3. Power supply: AC24V/DC12V;
4. Consumption: normal status 23W, peak 30W
5. Waterproof aviation connector

Environmental Indicators

1. Enclosure: aluminum alloy, sealed;
2. Working temp: -30°-55°;
3. Storage temp: -40°-70°;
4. Ingress protection: IP66;
5. Power consumption: 15W(normal), 45W(peak).

PTZ (Optional)

1. Duty: 30kg
2. Rotation: pan: 0~360°, tilt: -45°~+45°
3. Rotation speed: Pan: 0.01°~30°/S, tilt: 0.01°/S ~ 15°/S
4. 200 presets

5. Accuracy: $\pm 0.1^\circ$
6. Support multiple cruise-line scanning.
7. Keep Watching: Preset/Auto-Patrol/Auto-Scanning.
8. Power Off Memory: Support(Can restore the position before power off, patrol status, line-scanning status).
9. Azimuth information: support angle query, real time return, positioning; support azimuth video overlay real time display.
10. Null-point Correction: support north null-point remote correction function.
11. Power consumption: about 100W
12. Weight: 15kg

Environment Parameter

1. Operating temperature: -40 ~ +60 (-40 Optional);
2. Storage temperature: -45°~ +70°;
3. Humidity: <90%
4. Seismic resistance: 0.2g (in accordance with GB/T15211-2013's 5.4 Harsh grade 2);
5. Impact resistance: 15g (in accordance with GB/T15211-2013's 5.3 Harsh grade 3);
6. Lightning protection: interface circuit with built-in surge protection, 4000V power supply, 2000V signal;
7. Salt spray proof: continuous spray for 96 hours at pH 6.5 to 7.2, no change in surface.
8. Protection Level: IP66

Network Module (Optional)

1. IP Connection: RJ45,10/100 Base-T Adaptor (Integrated Video Output and RS485 Control)
2. Network Protocol: Support CTCP/IP, UDP, IPv4/v; Support HTTP, RTP, RTSP, NFS, DHCP, NTP, SMTP, SNMPv1/v2c/v3, UPNP, PPPoE, DNS, FTP; Support PSIA、ONVIF, etc.. (optional)
3. Encoding: H.264,Mpeg-4,Mpeg-2,MJPEG
4. Resolution: D1/4CIF/2CIF/CIF/QCIF

- 5. Frame rate: 25PAL/30NTSC Frame@D1
- 6. Local storage: support one 32G microSD card
- 7. Power consumption: about 8W

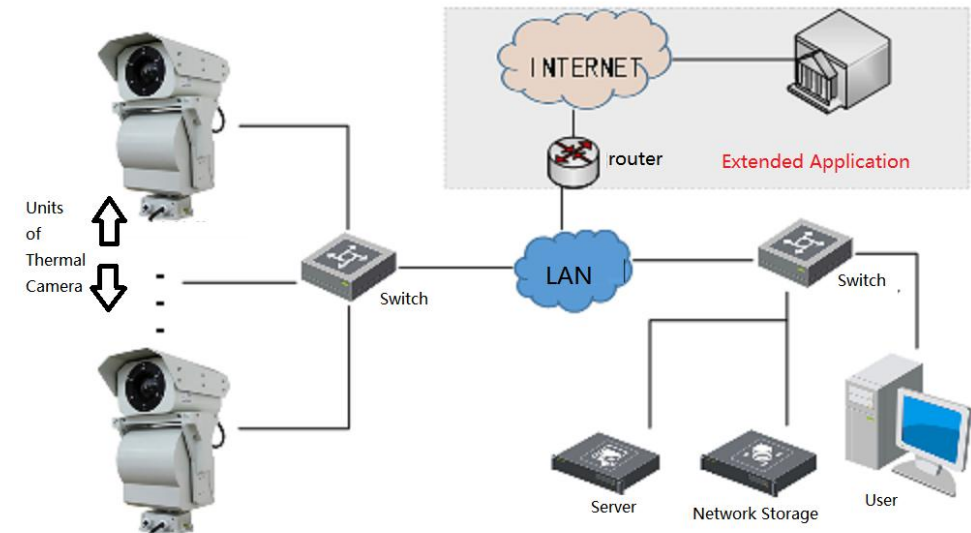
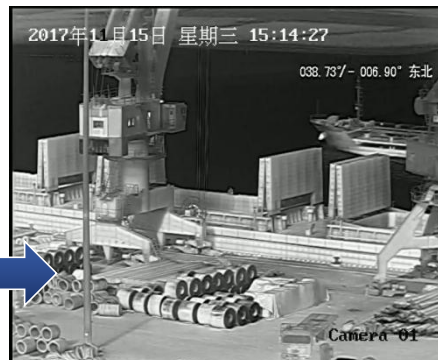
* The detection distance is related to the object and environment etc. Please contact with us for further information



Drone Tracking



Airport Monitoring



Networked Intelligent Application